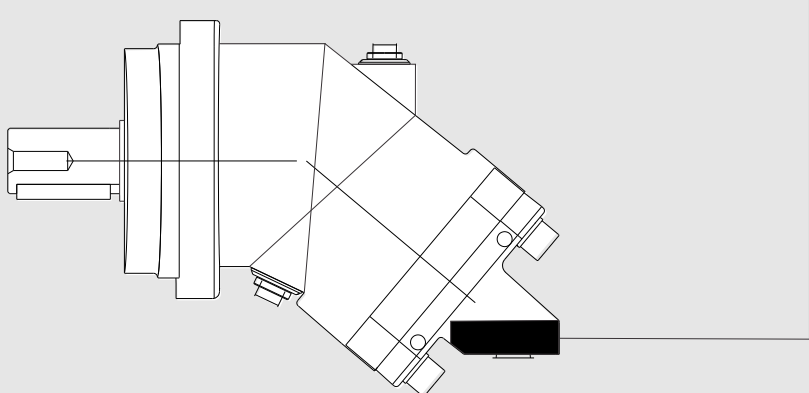
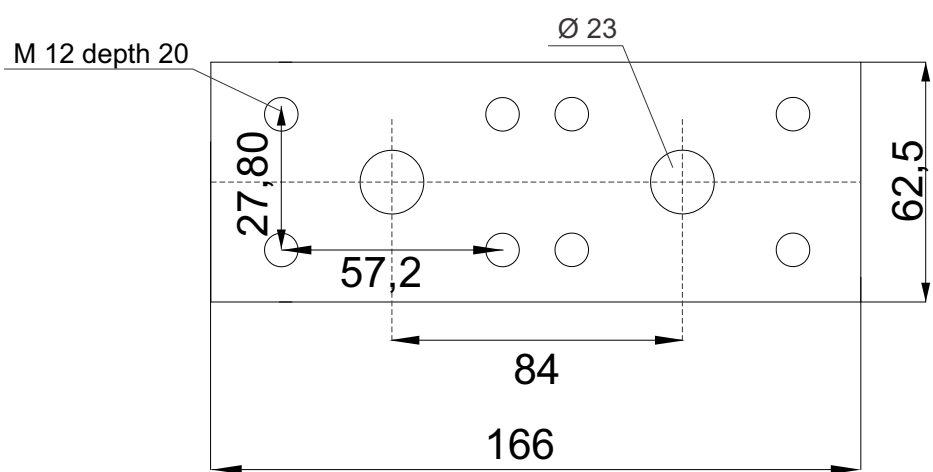


x 1000 rpm	x 1500 rpm	Max. Contin. Pump Speed	Max. Intermit. Pump Speed	Max. Contin. Pressure	Max. Peak Pressure	Torque bar	Torque at 350 bar	Max. Flow	Weight without accessor.	Weight with accessor.	Max. Motor Temp.	Min. Motor Temp.
80,00 cc	120,00 cc	4400 rpm	4900 rpm	400 bar	450 bar	1.28 m.N/bar	440 m.N	352	22,00 kg	22,50 kg	-25°	110°

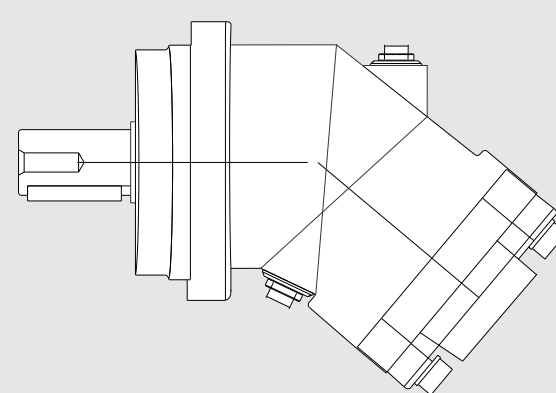
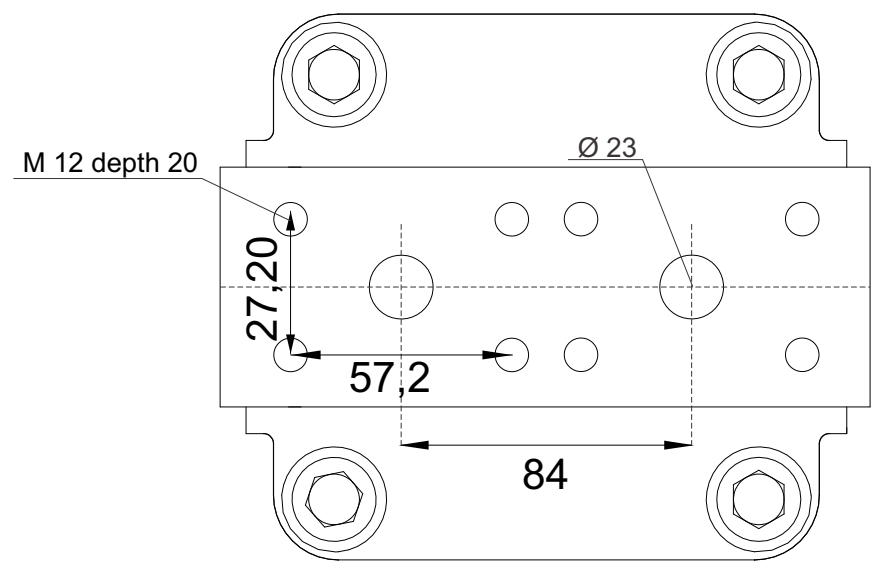
**B1**

SAE flange ports, bottom  
SAE 1" 6000 PSI



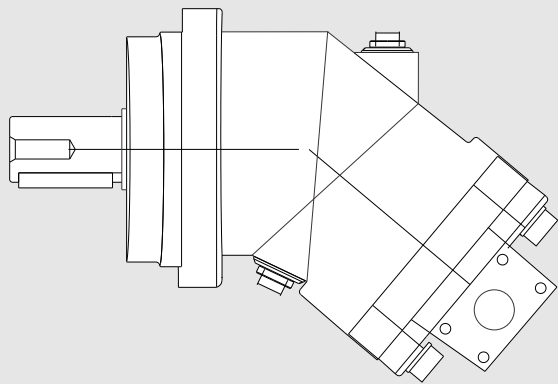
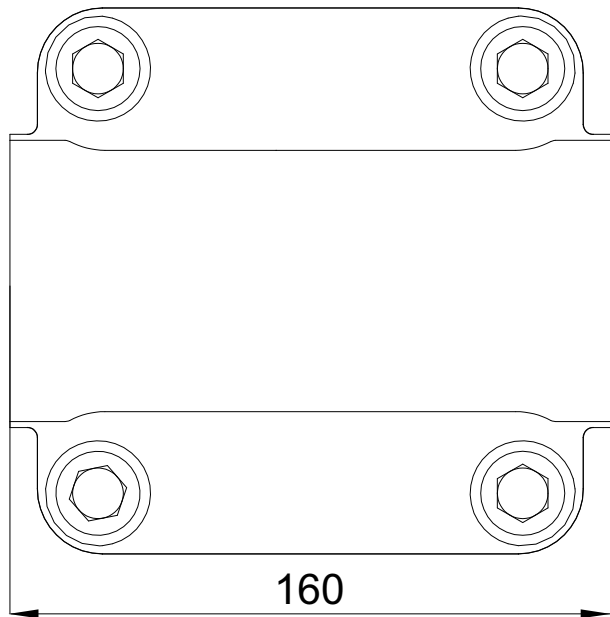
**R1**

SAE flange ports, rear  
SAE 1" 6000 PSI



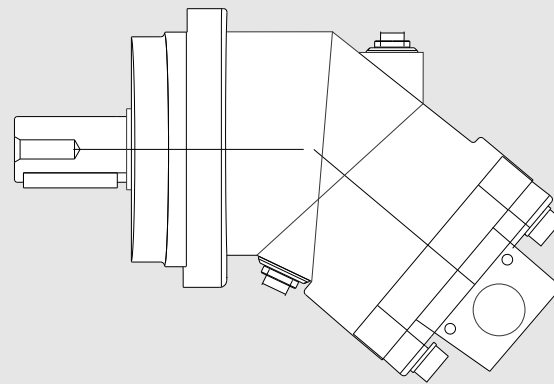
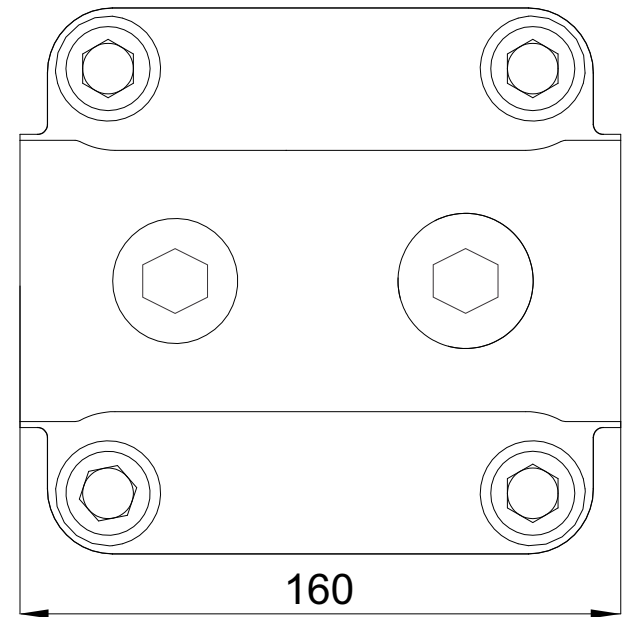
# D1-D2

SAE flange ports, side  
SAE 1" 6000 PSI



# D3

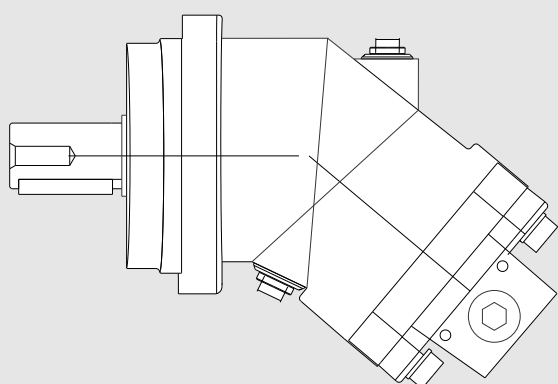
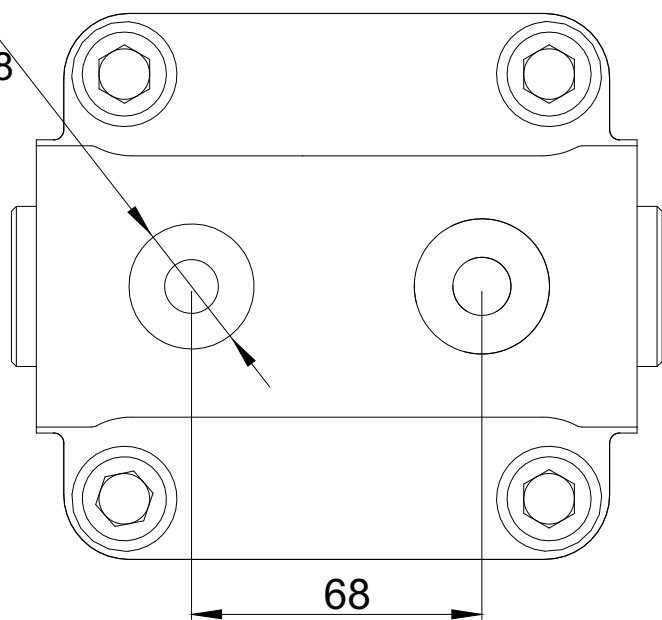
Side threaded ports



# R2

Rear threaded ports

M33x2 depth 18



# D4

Side threaded ports

