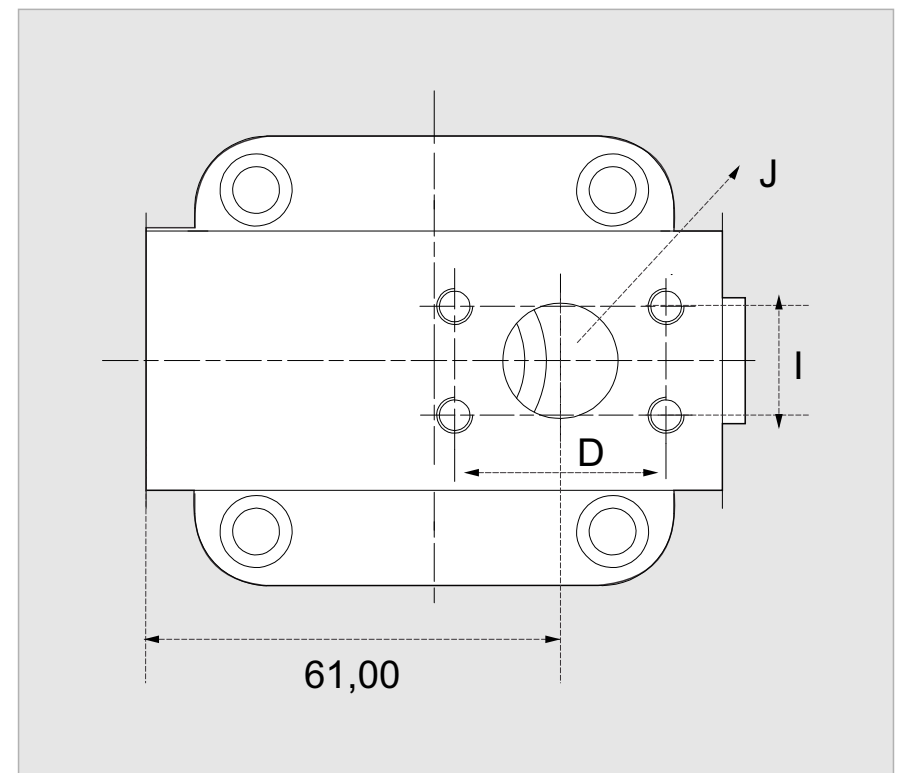


Outlet (6000 psi) : M22x1,5  
 Inlet (3000 psi) : M27x2

<b>x 1000 rpm</b>	12,00 cc
<b>x 1500 rpm</b>	18,00 cc
<b>Max. Continuous Pump Speed</b>	3100 rpm
<b>Max. Continuous Pressure</b>	400 bar
<b>Max. Peak Pressure</b>	450 bar
<b>Max. Torque at 350 bar</b>	66 Nm
<b>Max. Flow</b>	37,20 l/min.
<b>Min. Pump Temperature</b>	-25 °C
<b>Max. Pump Temperature</b>	110 °C
<b>Weight without accessories</b>	6,00 kg
<b>Weight with accessories</b>	6,20 kg
<b>Rotation</b>	CW-CCW



**S1**

Splined shaft DIN 5480  
 W25x1.25x18x9g

Technical drawing of a splined shaft S1. Dimensions include M10x1.5, 7.5, 22, 22, 28, and 28.

**S2**

Splined shaft DIN 5480  
 W20x1.25x14x9g

Technical drawing of a splined shaft S2. Dimensions include M6x1, 5, 16, 22, 34, and 28.

**K1**

Parallel keyed shaft  
 DIN 6885, AS8x7x32

Technical drawing of a parallel keyed shaft K1. Dimensions include 28, 25, M10x1.5, 7.5, 22, 40, 28, and Key width 8.

**K2**

Parallel keyed shaft  
 DIN 6885, AS6x6x32

Technical drawing of a parallel keyed shaft K2. Dimensions include 22.5, 20, M6x1, 5, 16, 40, 28, and Key width 6.